

**VILLAGE OF MAPLE PARK
KANE AND DEKALB COUNTIES, ILLINOIS**

ORDINANCE NO. 2016-17

AN ORDINANCE ADOPTING THE MAPLE PARK ZONING MAP

**ADOPTED BY
THE BOARD OF TRUSTEES
OF THE
VILLAGE OF MAPLE PARK, ILLINOIS
This 1st day of November, 2016**

ORDINANCE NO. 2016-17

AN ORDINANCE ADOPTING THE MAPLE PARK ZONING MAP

WHEREAS, the Board of Trustees of the Village of Maple Park, Illinois has determined that it is in the best interest and welfare of the citizens of the Village of Maple Park, to adopt the zoning map of the Village of Maple Park, Illinois, DeKalb and Kane Counties.

NOW, THEREFORE, BE IT ORDAINED by the President and Board of Trustees of the Village of Maple Park, Illinois as follows:

Section 1. Pursuant to 65 ILCS 5/11-13-19, the Village of Maple Park shall annually publish the Official Zoning Map of the City. The Official Zoning Map of the Village of Maple Park, as of December 31, 2012, a copy of which is attached to this Ordinance and labeled Exhibit "A," is hereby published.

Section 2. The Official Zoning Map shall be filed and available for public purposes in the Office of the Village Clerk.

Section 3. This Ordinance shall be in full force and effect upon its passage and approval according to law.

PRESENTED to the Board of Trustees of the Village of Maple Park, DeKalb and Kane Counties, Illinois, this 1st day of November, 2016.

PASSED by the Board of Trustees of the Village of Maple Park, Kane and DeKalb Counties, Illinois, this 1st day of November, 2016.

SIGNED by the President of the Board of Trustees of the Village of Maple Park, Kane and DeKalb Counties, Illinois, this 1st day of November, 2016.

AYES: Goucher, Dalton, Higgins, Harris, Borg, Dries

NAYS: None

ABSENT: None



Kathleen Curtis
Kathleen Curtis, Village President
Village of Maple Park, Illinois

ATTEST:
Elizabeth Peerboom
Elizabeth Peerboom, Village Clerk

STATE OF ILLINOIS)
) SS
COUNTIES OF KANE AND DEKALB)

PUBLICATION IN PAMPHLET FORM

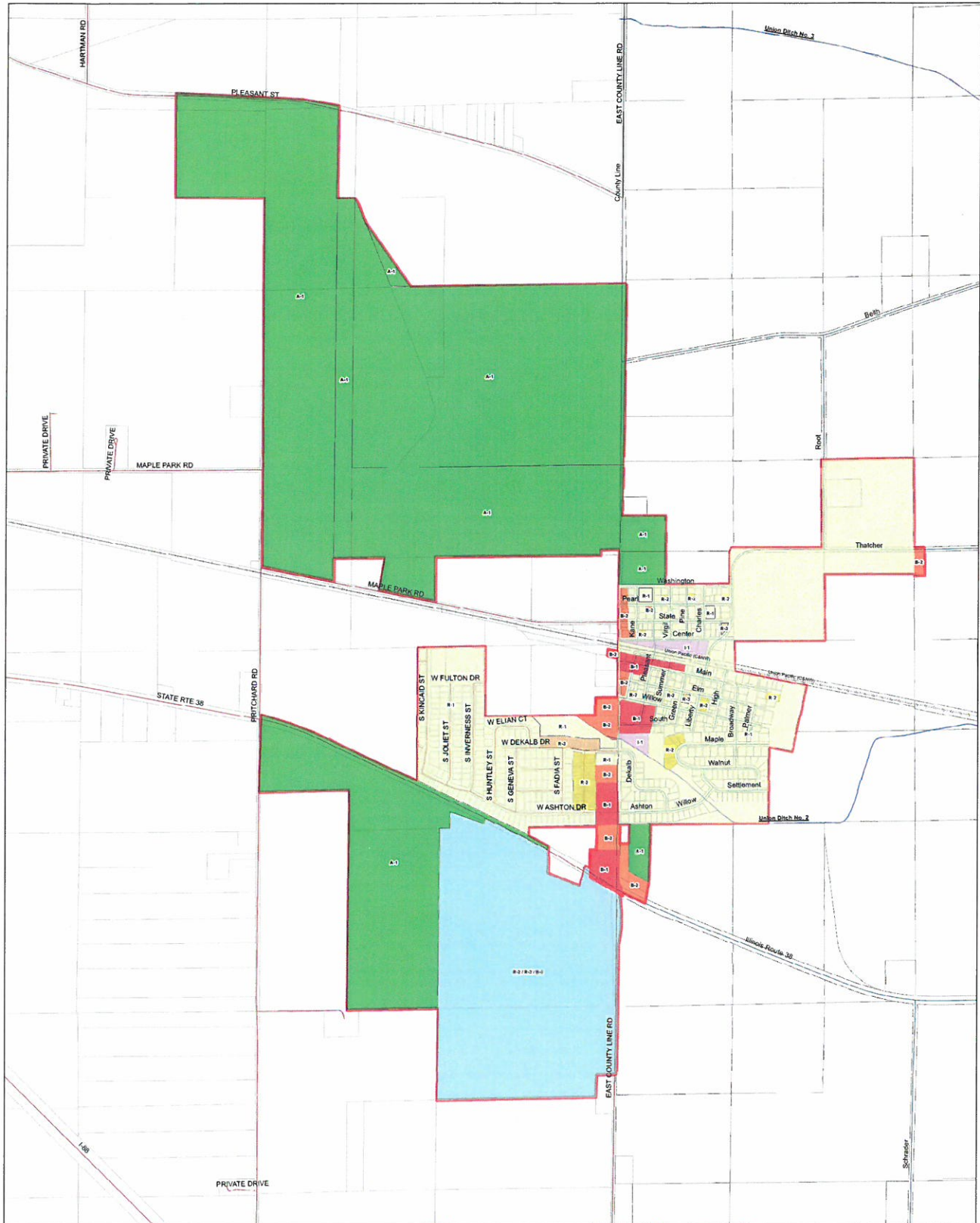
I, Elizabeth Peerboom, certify that I am the Village Clerk of the Village of Maple Park, Kane and DeKalb Counties, Illinois, and as such officer I am the keeper of the records, files and proceedings of the corporate authorities of said municipality.

I further certify that, as of the date hereof, Ordinance No. 2016-17, adopted by the corporate authorities on November 1, 2016, entitled "AN ORDINANCE ADOPTING THE MAPLE PARK ZONING MAP," has been duly published in pamphlet form in accordance with Section 1-2-4 of the Illinois Municipal Code.

IN WITNESS WHEREOF, I have hereunto affixed my official hand and the seal of the municipality this 1st day of November, 2016.



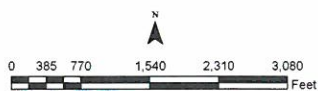
Elizabeth Peerboom
Elizabeth Peerboom, Village Clerk
Village of Maple Park
Kane and DeKalb Counties, IL



Village of Maple Park, Illinois

Zoning District Map
Attachment A

Published by the Authority of
The Board of Trustees of Maple Park,
DeKalb and Kane County, Illinois



Legend	
	MAPLE PARK - CORPORATE LIMITS
	RAILROAD
Zoning	
Description	
	A-1 AGRICULTURAL
	B-1 CENTRAL BUSINESS DISTRICT
	B-2 GENERAL BUSINESS DISTRICT
	I-1 LIMITED INDUSTRIAL DISTRICT
	R-1 SINGLE FAMILY DISTRICT
	R-2 GENERAL RESIDENCE DISTRICT
	R-3 MULTIPLE FAMILY DISTRICT
	R-2 / R-3 / B-2 PUD