

**VILLAGE OF MAPLE PARK  
KANE AND DEKALB COUNTIES, ILLINOIS**

---

**ORDINANCE NO. 2017-03**

**AN ORDINANCE ADOPTING THE MAPLE PARK ZONING MAP**

---

**ADOPTED BY  
THE BOARD OF TRUSTEES  
OF THE  
VILLAGE OF MAPLE PARK, ILLINOIS**

---

**ORDINANCE NO. 2017-03**

**AN ORDINANCE ADOPTING THE MAPLE PARK ZONING MAP**

**WHEREAS**, the Board of Trustees of the Village of Maple Park, Illinois has determined that it is in the best interest and welfare of the citizens of the Village of Maple Park, to adopt the zoning map of the Village of Maple Park, Illinois, DeKalb and Kane Counties.

**NOW, THEREFORE, BE IT ORDAINED** by the President and Board of Trustees of the Village of Maple Park, Illinois as follows:

**Section 1.** Pursuant to 65 ILCS 5/11-13-19, the Village of Maple Park shall annually publish the Official Zoning Map of the City. The Official Zoning Map of the Village of Maple Park, as of March 7, 2017, a copy of which is attached to this Ordinance and labeled Exhibit "A," is hereby published.

**Section 2.** The Official Zoning Map shall be filed and available for public purposes in the Office of the Village Clerk.

**Section 3.** This Ordinance shall be in full force and effect upon its passage and approval according to law.

**PRESENTED** to the Board of Trustees of the Village of Maple Park, DeKalb and Kane Counties, Illinois, this 5<sup>th</sup> day of July, 2017.

**PASSED** by the Board of Trustees of the Village of Maple Park, Kane and DeKalb Counties, Illinois, this 5<sup>th</sup> day of July, 2017.

**SIGNED** by the President of the Board of Trustees of the Village of Maple Park, Kane and DeKalb Counties, Illinois, this 6<sup>th</sup> day of July, 2017.

AYES: Dalton, Higgins, Dries

NAYS: None

ABSENT: Goucher, Harris



Kathleen Curtis  
Kathleen Curtis, Village President  
Village of Maple Park, Illinois

Elizabeth Peerboom  
Elizabeth Peerboom, Village Clerk

STATE OF ILLINOIS )  
 ) SS  
COUNTIES OF KANE AND DEKALB )

**PUBLICATION IN PAMPHLET FORM**

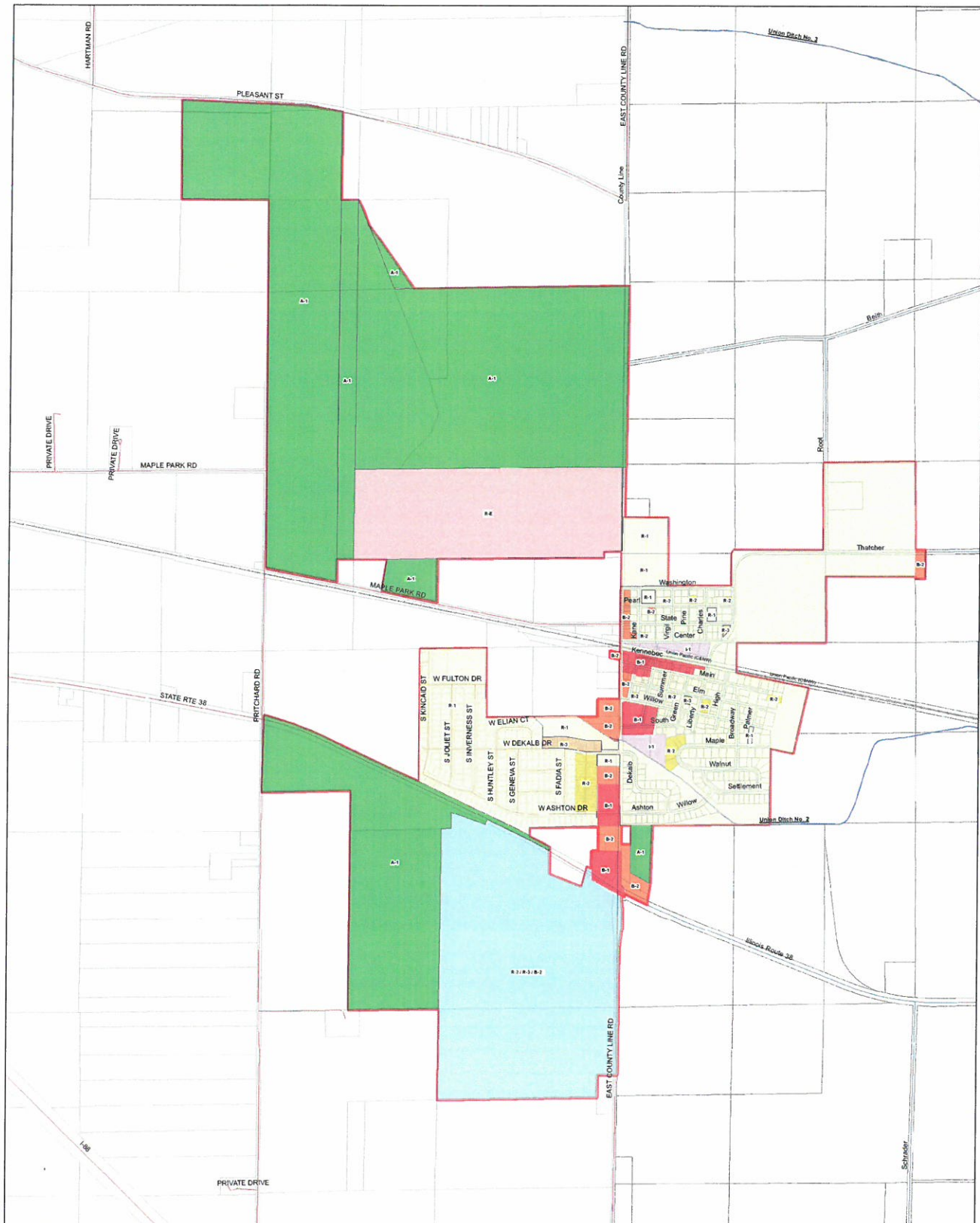
I, Elizabeth Peerboom, certify that I am the Village Clerk of the Village of Maple Park, Kane and DeKalb Counties, Illinois, and as such officer I am the keeper of the records, files and proceedings of the corporate authorities of said municipality.

I further certify that, as of the date hereof, Ordinance No. 2017-03, adopted by the corporate authorities on July 5, 2017, entitled "AN ORDINANCE ADOPTING THE MAPLE PARK ZONING MAP," has been duly published in pamphlet form in accordance with Section 1-2-4 of the Illinois Municipal Code.

IN WITNESS WHEREOF, I have hereunto affixed my official hand and the seal of the municipality this 6<sup>th</sup> day of July, 2017.



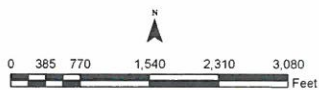
*Elizabeth Peerboom*  
Elizabeth Peerboom, Village Clerk  
Village of Maple Park  
Kane and DeKalb Counties, IL



## Village of Maple Park, Illinois

### Zoning District Map Attachment A

Published by the Authority of  
The Board of Trustees of Maple Park,  
DeKalb and Kane County, Illinois



Legend	
	MAPLE PARK - CORPORATE LIMITS
	RAILROAD
Zoning Description	
	A-1 AGRICULTURAL
	B-1 CENTRAL BUSINESS DISTRICT
	B-2 GENERAL BUSINESS DISTRICT
	I-1 LIMITED INDUSTRIAL DISTRICT
	R-1 SINGLE FAMILY DISTRICT
	R-2 GENERAL RESIDENCE DISTRICT
	R-3 MULTIPLE FAMILY DISTRICT
	R-E RESIDENTIAL ESTATE DISTRICT
	R-2 / R-3 / B-2 PUD